

Winthrop (864 TRV / GS) Enamel Fireback

Installation Instructions (sku 96100267)

Compatibility

- 864 TRV
- 864 HH
- 864 GS

Packing List

- Rear Fireback
- (2) Side Firebacks
- Floor Fireback



We recommend cleaning the enamel surface with glass cleaner and a soft cloth.

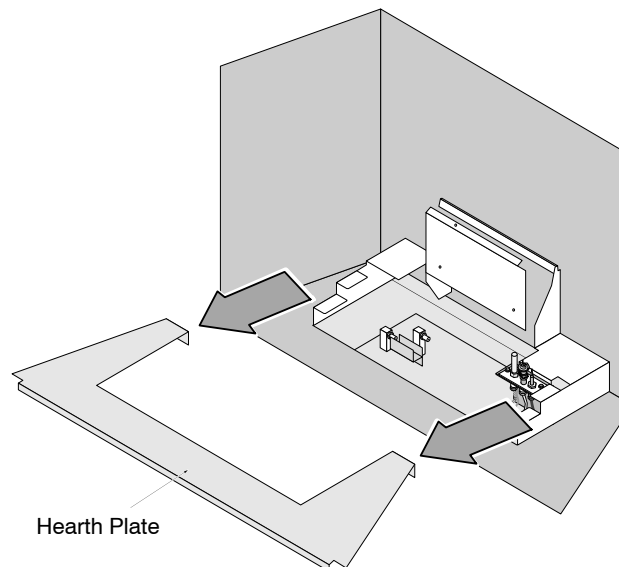
Installation

WARNING Turn off gas to the appliance and make sure it has fully cooled prior to conducting service.

- 1 Remove the glass frame and logs (see the installation manual for details).
- 2 Follow the directions below to prepare the firebox.

864TRV

Remove the burners (see the installation manual for details)
Remove and discard the hearth plate.



864HH

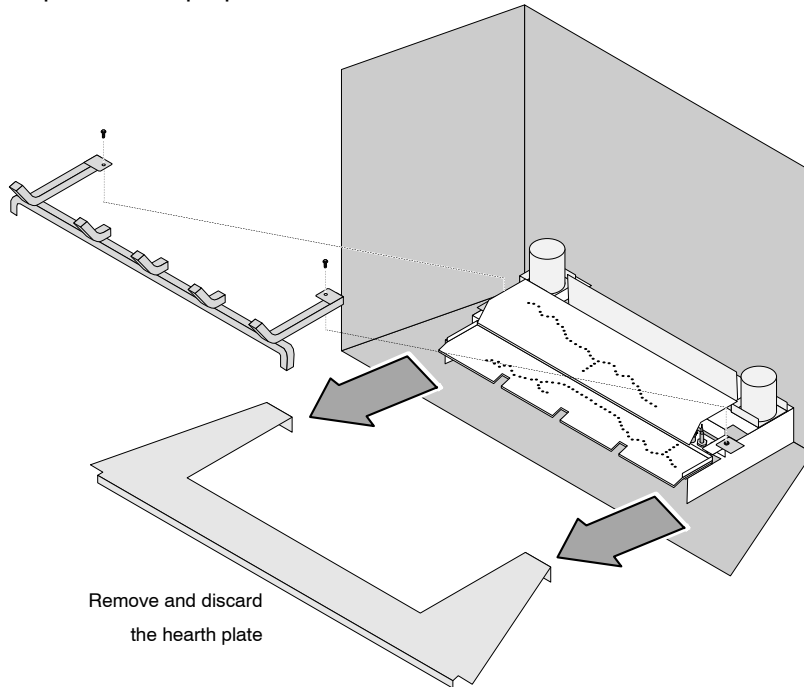
Remove and discard the hearth plate (see illustration above).



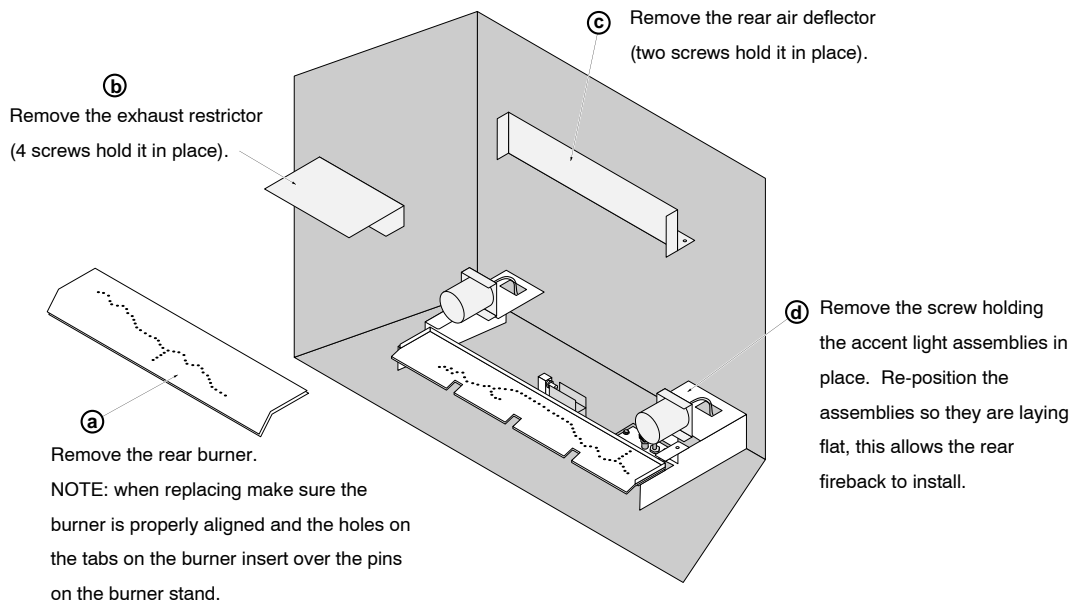
Winthrop (864 TRV / GS) Enamel Fireback Installation Instructions (sku 96100267)

864 GS

Follow the steps below to prepare the firebox.



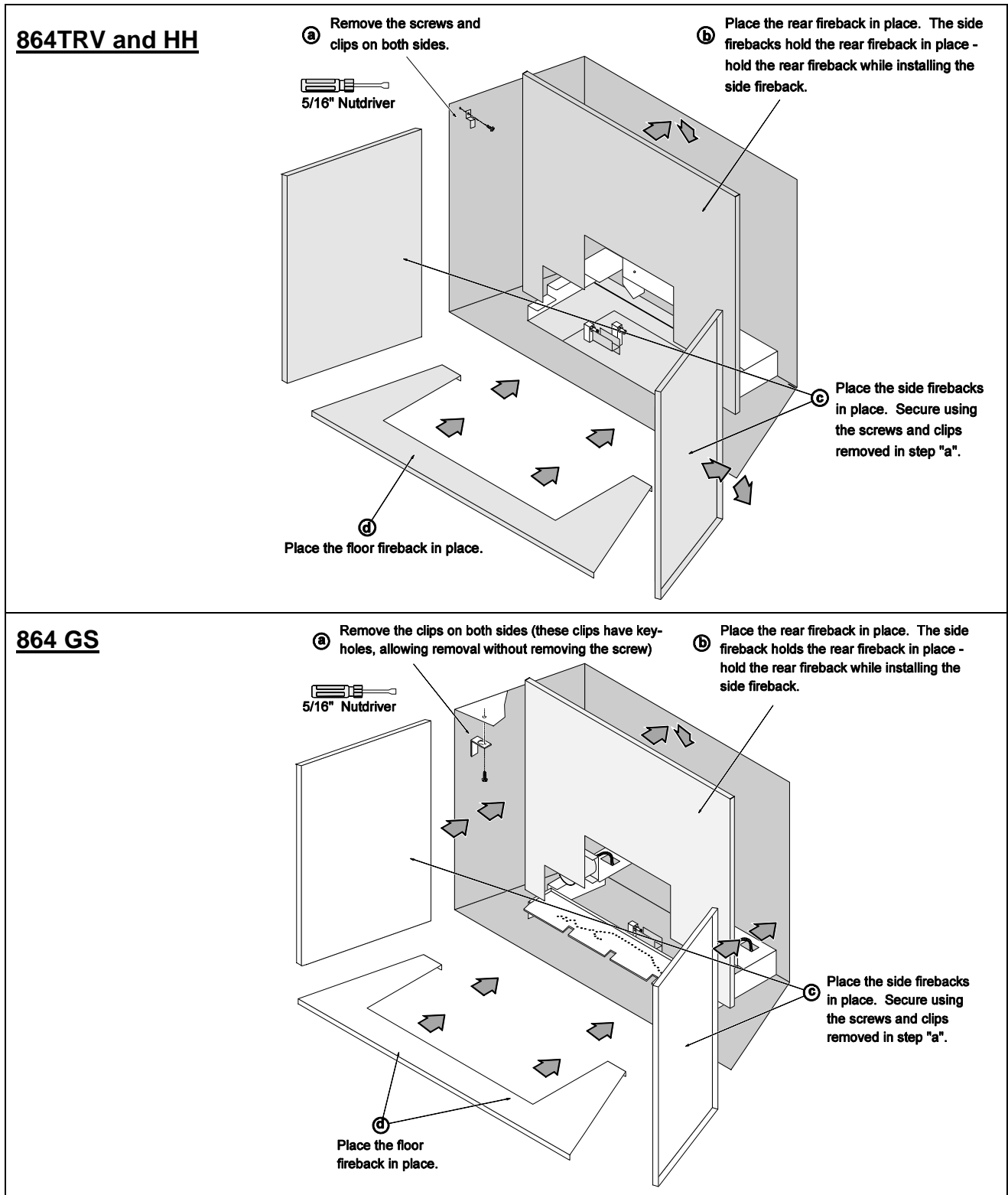
Remove and discard
the hearth plate





Winthrop (864 TRV / GS) Enamel Fireback Installation Instructions (sku 96100267)

3 Install the firebacks following the directions below



4 Restore the fireplace to the correct configuration.