



TRAVIS INDUSTRIES
HOUSE OF FIRE

564 SS Fireback Installation

SKU # 96100179 (Brick / Herringbone) SKU # 96100182 (Diamond / Stucco)
SKU # 96100181 (Seattle Rock Creek) SKU # 96100183 (Basket Weave / Quilt)
SKU # 96100270 (Handmade Brick) SKU # 96100271 (Reclaimed Brick)

Packing List

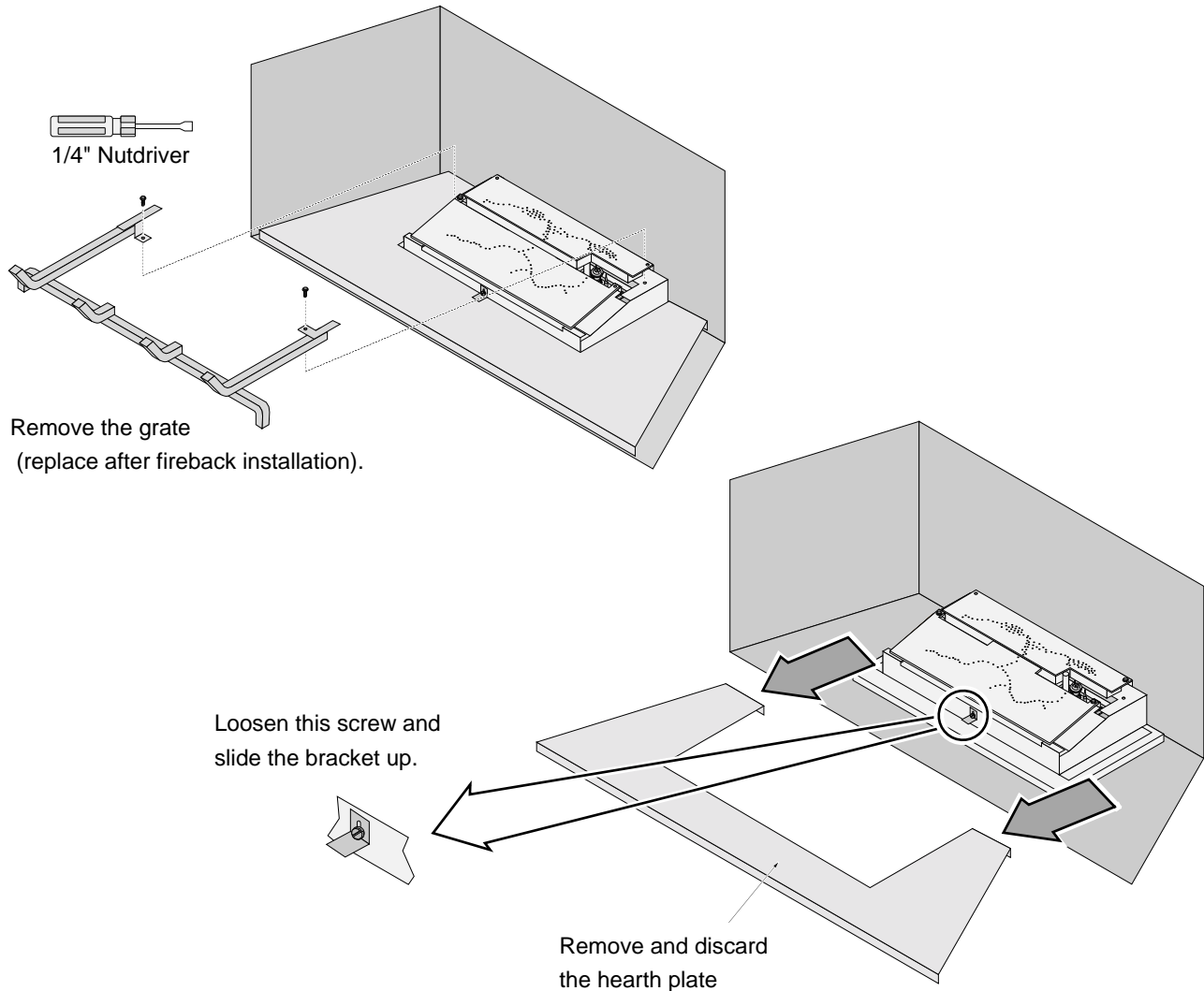
- Rear Fireback
- (2) Side Firebacks
- (2) Floor Firebacks

Installation

WARNING Turn off gas to the appliance and make sure it has fully cooled prior to conducting service.

NOTE On two-sided firebacks make sure to use the desired pattern.

- 1 Remove the glass frame and logs (see the installation manual for details).
- 2 Remove the grate (replace after fireback installation). Remove and discard the hearth plate.





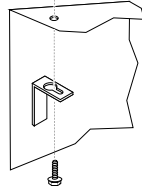
TRAVIS INDUSTRIES
HOUSE OF FIRE

564 SS Fireback Installation

SKU # 96100179 (Brick / Herringbone) SKU # 96100182 (Diamond / Stucco)
SKU # 96100181 (Seattle Rock Creek) SKU # 96100183 (Basket Weave / Quilt)
SKU # 96100270 (Handmade Brick) SKU # 96100271 (Reclaimed Brick)

3 Install the firebacks following the directions below.

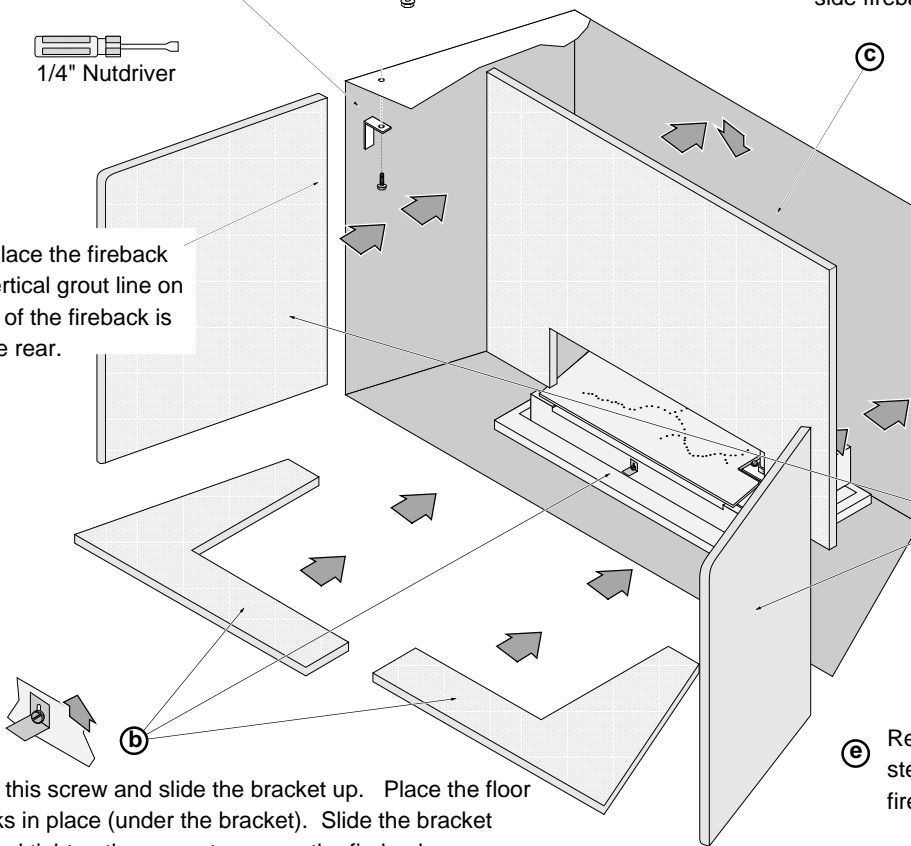
- a Remove the clip located on the firebox ceiling near the front (both sides). The side fireback clip has a keyhole slot. It can be removed by loosening the screw and sliding the clip out.



Place the rear fireback in place. The side fireback holds the rear fireback in place - hold the rear fireback while installing the side fireback.



NOTE: Place the fireback so the vertical grout line on the edge of the fireback is facing the rear.



Loosen this screw and slide the bracket up. Place the floor firebacks in place (under the bracket). Slide the bracket down and tighten the screw to secure the firebacks.

Place the side firebacks in place.

Replace the clips removed in step "a" to secure the side firebacks..



Due to the construction of the ceramic firebacks, you may need to re-position the firebacks to achieve the correct alignment.

4 Restore the fireplace to the correct configuration.